



MAX THOMPSON









Our Buying Charter

Sustainable, socially just, environmentally responsible because fundamentally, we think this is the right thing to do.



Talk face-to-face Ensure traceability
Create connection Build trust
SHARING INSPIRING STORIES

DIRECT TRADE

THROUGH GROWERS AGENTS

DIRECT FROM GROWER

AUCTIONS
Efficient - Fair
Transparent - Comparable

FACILITATED TRADE

Bell
tea & coffee company













NZIFF NEW ZEALAND INTERNATIONAL FILM FESTIVAL

AUCKLAND
17 JULY - 3 AUGUST

NZIFF.CO.NZ



KEY SUPPORTERS:



AUCKLAND LIVE



ASB Community Trust
In Partnership with Auckland Film Commission
powered by ASB

Resene
the paint the professionals use







THE
SWEET
SHOP.





PINOT NAH.



THE BEER AROUND HERE SINCE 1889.





FISHERMAN

EST 2012

OLD SEA DOG

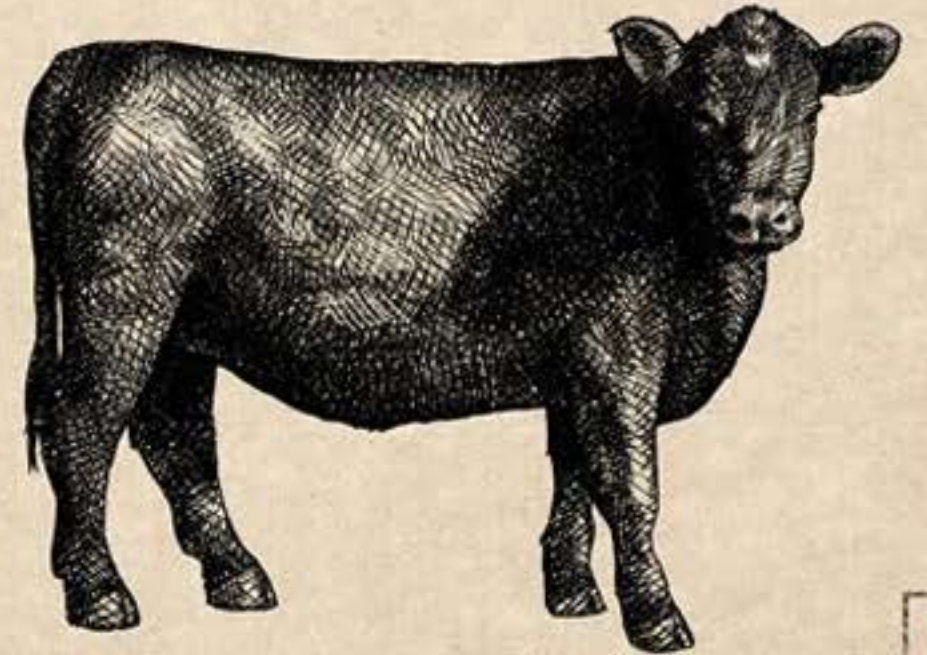
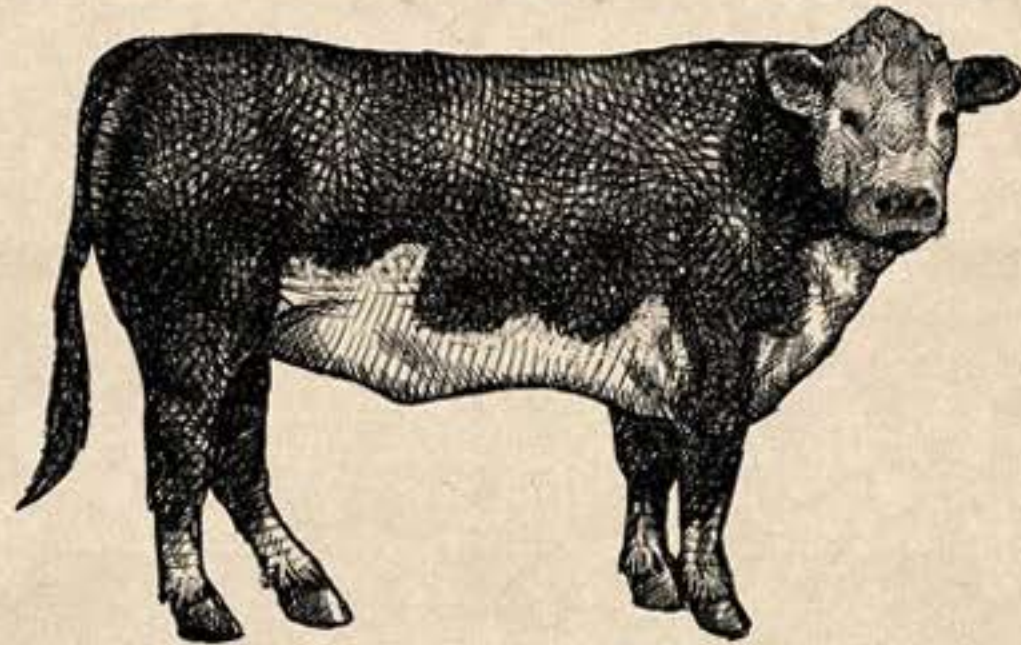
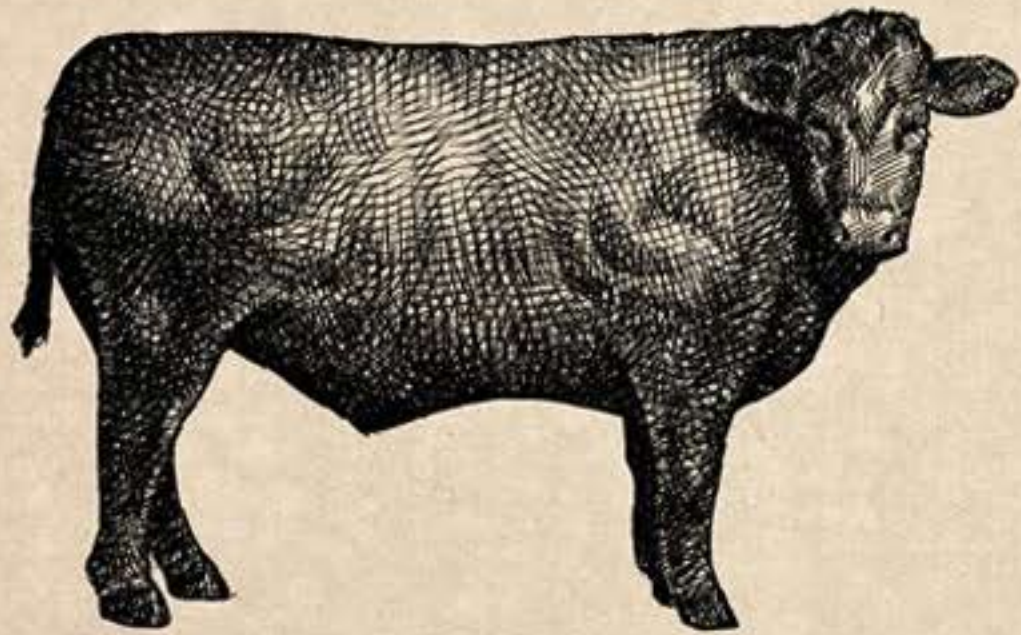
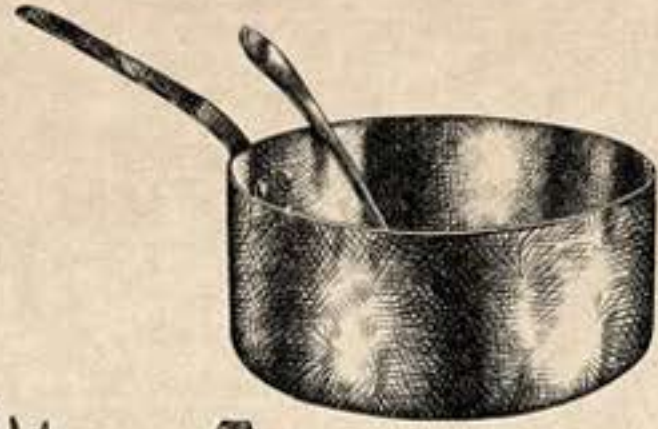
RAIN.HAIL.SHINE

JUST ANOTHER

























Cheers!

Always blue skies ahead.

ENDLESSLY REFRESHING

CATALINA



A LITTLE LOCAL LAGER
LITTLE CREATURES NEW ZEALAND

330mL
4.3% ALC/VOL











LA MONTÉE
CHAMPAGNE





FEIJOA FESTIVAL



NEW ZEALAND HOME OF SALTY ANGLERS

Just Another Fisherman



BROADBILL - SWORDFISH

Scientific Name - *Xiphus gladius*
Location - Found only in tropical and temperate parts of the Atlantic, Pacific, and Indian Oceans
Techniques - Deepwater, Live Bait, Lure



STRIPED MARLIN

Scientific Name - *Skipka macleay*
Location - Tropical to temperate Indo-Pacific oceans but not the Indian
Techniques - Deepwater, Live Bait, Lure



PACIFIC BLUEFIN TUNA

Scientific Name - *Thunnus albaculus*
Location - Southern Pacific Ocean
Techniques - Deepwater, Live Bait, Lure



SOUTHERN BLUEFIN TUNA

Scientific Name - *Thunnus maculatus*
Location - South Atlantic, Indian and Western South Pacific Oceans
Techniques - Deepwater, Live Bait, Lure



HAPUKA - HĀPUKU, GROUPEL OR WHAPUKU

Scientific Name - *Paralichthys oblongus*
Location - Southern Australia, Southern South America, South Africa, Tropical Pacific and New Zealand
Techniques - Deepwater, Live Bait, Lure



YELLOWFIN TUNA - AHI

Scientific Name - *Thunnus albacares*
Location - Tropical and subtropical oceans worldwide
Techniques - Deepwater, Live Bait, Lure



SNAPPER - TAMURE (MĀTĪ), KARATI (KARANGĀ)

Scientific Name - *Pagrus auratus*
Location - Found in New Zealand's North Island and outer South Island
Techniques - Deepwater, Live Bait, Lure



YELLOWTAIL KINGFISH - HAKU

Scientific Name - *Centropristis striata*
Location - Mainly temperate waters of the Southern Hemisphere
Techniques - Deepwater, Live Bait, Lure



MAHI MAHI - COMMON DOLPHINFISH

Scientific Name - *Coryphaena hippurus*
Location - Off shore temperate, tropical, and subtropical waters worldwide
Techniques - Deepwater, Live Bait, Lure



TREVALLY - ARAARA

Scientific Name - *Pseudocaranx dentex*
Location - New Zealand North Island and the top half of the South Island
Techniques - Deepwater, Live Bait, Lure



KAHAWAI

Scientific Name - *Crucianella*
Location - South Eastern and South Western Coasts of Australia and the New Zealand Southern
Techniques - Deepwater, Live Bait, Lure



RED GURNARD - PŌWAHIAU

Scientific Name - *Chelodactylus lucicola*
Location - Offshore around New Zealand
Techniques - Deepwater, Lure



JOHN DORY - KUPAU

Scientific Name - *Solea solea*
Location - North waters around the North Island of New Zealand, most commonly south of the Bay of Plenty
Techniques - Deepwater, Live Bait, Lure



WHITEBAIT - IMANGA

Scientific Name - *Galaxias truttaceus*
Location - Southern Hemisphere, found in a wide variety of habitats, from the tropics to coastal waters, temperate waters, lakes and wetlands
Techniques - Deepwater, Live Bait, Lure



BLUENOSE - MATIRI

Scientific Name - *Myoxocephalus aeneus*
Location - Found in temperate waters of the Southern Hemisphere
Techniques - Deepwater, Lure



HOKI - BLUE GRENADIER

Scientific Name - *Macrurus heterochaelis*
Location - Relative to the south-western Pacific Ocean around New Zealand and occasionally off Southern Australia
Techniques - Deepwater



BLUE COD - PĀKIRIKIRI

Scientific Name - *Paralichthys oblongus*
Location - New Zealand, more abundant south of Cook Strait and around the Chatham Islands
Techniques - Deepwater, Lure



BLUE MOKI

Scientific Name - *Lutjanus fulvus*
Location - New Zealand and occasionally off Southern Australia
Techniques - Deepwater



GREY MULLET - KANAE

Scientific Name - *Mullus castratus*
Location - Restricted to coastal temperate and tropical waters
Techniques - Live Baiting, Fly



CRAYFISH - KŌURA

Scientific Name - *Parastacis pinnifrons* and *Parastacis australis*
Location - North Island and in the Northwest of the South Island
Techniques - Fishing, Potting



Barely Keeping it Together

