



LISA NICOLE MOES





















THE *Ocean* GUIDE TO

WHAT KIND OF

Ice Cream Eater

ARE YOU?

THE SUCKER



CREATIVE TYPES. TYPICALLY HAVE A HISTORY OF PLAYING WITH THEIR FOOD. OF THE SAME ILK AS MASHED POTATO SCULPTORS. SUCKERS LOVE NOTHING MORE THAN TO INHALE ICE CREAM THROUGH A NIBBLED HOLE IN THE BOTTOM OF THE CONE, AND WATCH THE TOP RECEDE LIKE A SINKHOLE.

THE SLURPER



A SERIOUS ICE CREAM ENTHUSIAST. UNASHAMEDLY LOUD AND MESSY. COMMITS THEIR ENTIRE FACE TO DEVOURING THE TREAT. ENTERS A TRANCE-LIKE STATE, DURING WHICH SOME HAVE BEEN KNOWN TO FORGET ABOUT BREATHING. IN THESE SITUATIONS, THE SPELL CAN ONLY BE BROKEN BY A CRONUT.

THE ROLONGER

WILL DO WHATEVER IT TAKES TO PROLONG THE LIFE OF THEIR ICE CREAM. HAVE BEEN KNOWN TO CONSUME WHOLE ICE CREAMS BY ONLY LICKING THE DRIPS OFF THE CONE. SOME THEORIES LINK THE BEHAVIOUR TO THEIR QUEST FOR VALUE. OTHERS SIMPLY BELIEVE THEY NEVER WANT THE JOY TO END.

THE BITER



A TRULY BRAVE CREATURE. OPERATES ENTIRELY WITHOUT FEAR OF ICE CREAM HEADACHES. ALSO VERY POLARISING. MANY CAN'T BEAR TO OBSERVE THEM IN ACTION. OTHERS REVERE THEM FOR THE STRENGTH OF THEIR TEETH. OFTEN FINISHED FIRST AND SHOULD THEN BE CONSIDERED A MAJOR THREAT BY THOSE STILL IN POSSESSION OF A HEALTHY CONE.

The Licker



A PURIST. OFTEN OUTRAGED AT THE "SACRILEGIOUS" CONSUMPTION HABITS OF OTHERS SUCH AS THE BITER. THEY WEAR THEIR COLOURFUL TONGUE AS A BADGE OF HONOUR. ALWAYS UP FOR A POST-ICE CREAM PUKANA!

THE STRATEGIST

ALSO KNOWN AS IMGS (ICE CREAM MANAGEMENT GURUS). RESPONSIBLE FOR THE EMERGENCE OF TERMS SUCH AS 'CREAM TO CONE RATIO', 'DRIP PREVENTION TACTICS' AND 'FINAL BITE FACTOR'. CALCULATED AND METICULOUS, BUT NO LESS PASSIONATE.

NOW YOU KNOW YOUR BITERS FROM YOUR *Suckers*

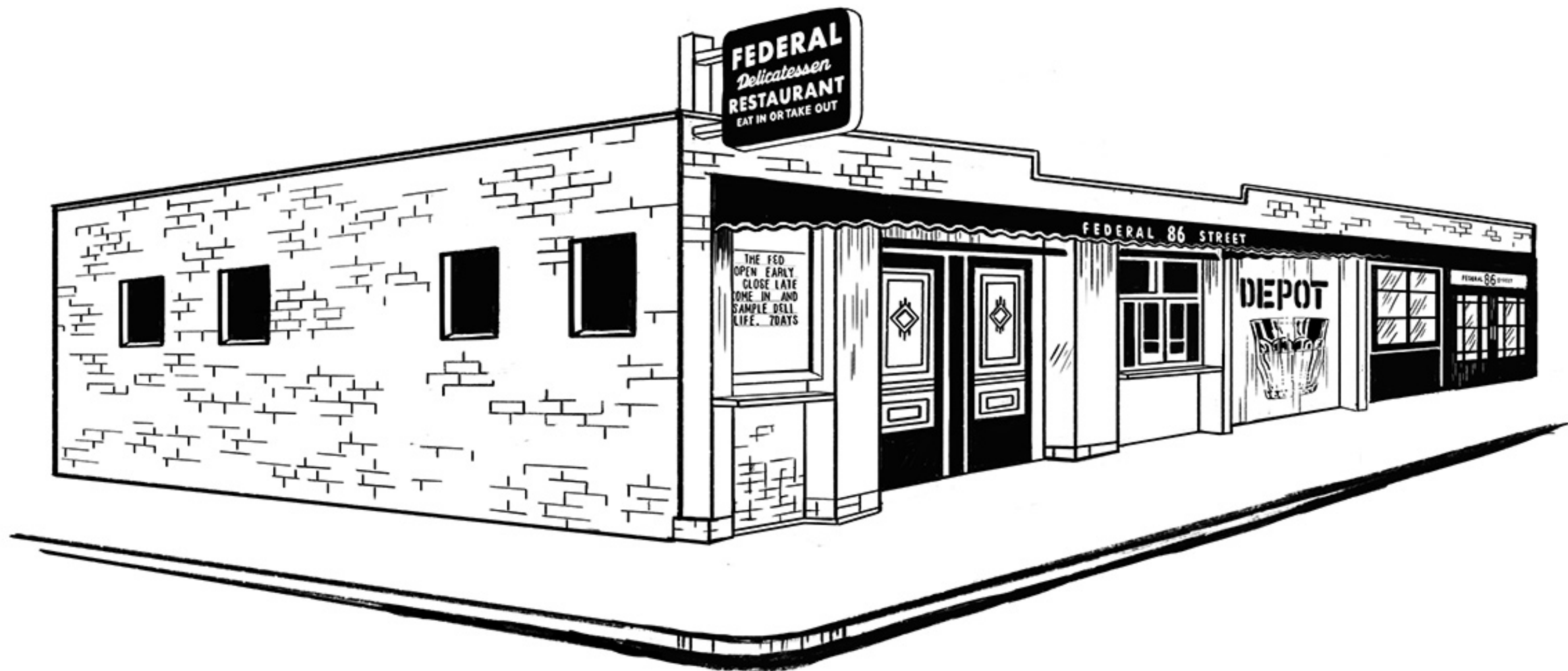
AND YOU'VE HOPEFULLY AVOIDED AN ICE CREAM IDENTITY CRISIS. BUT WHY ALL THIS TALK OF NEW ZEALAND'S FAVOURITE SUMMER TREAT?

UNFOLD THE BOOKLET TO FIND OUT MORE.

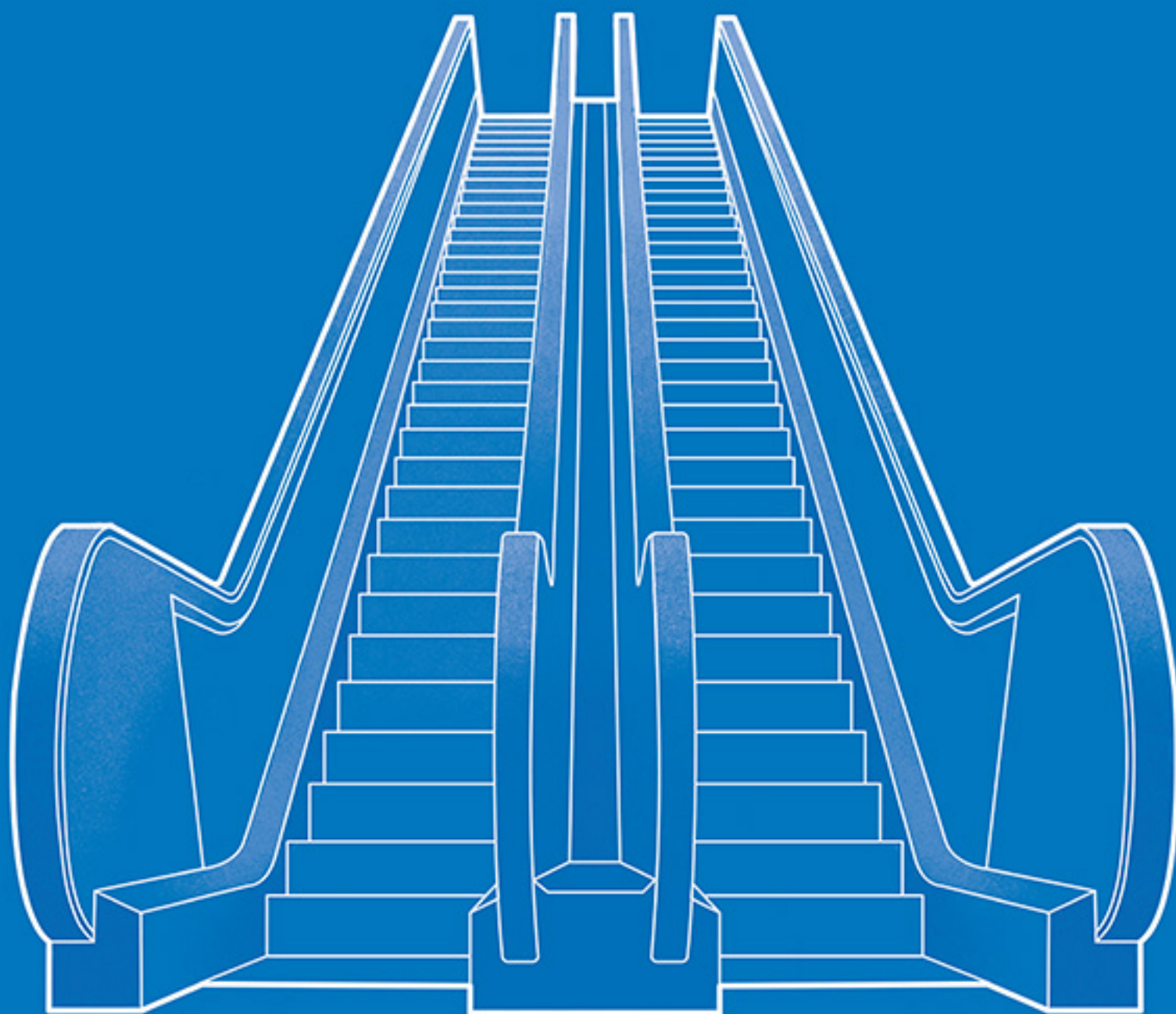
WE DELIVER



NZX







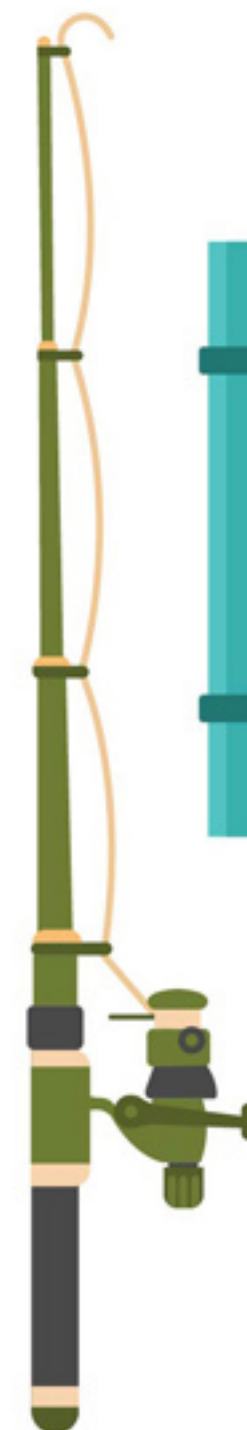
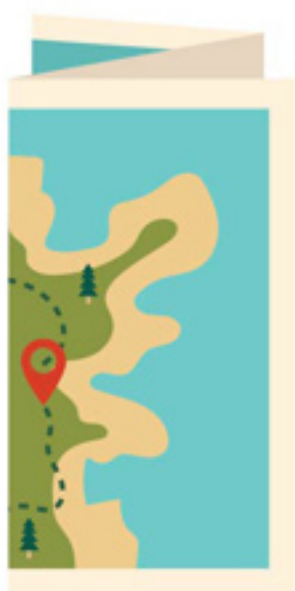
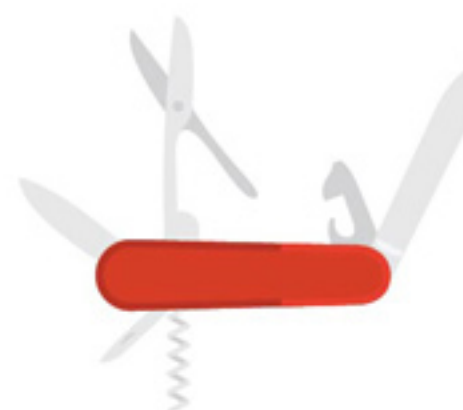
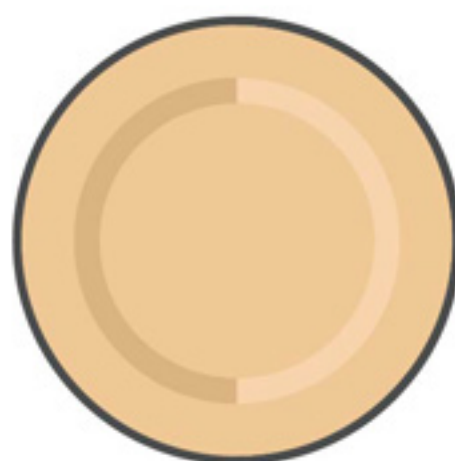
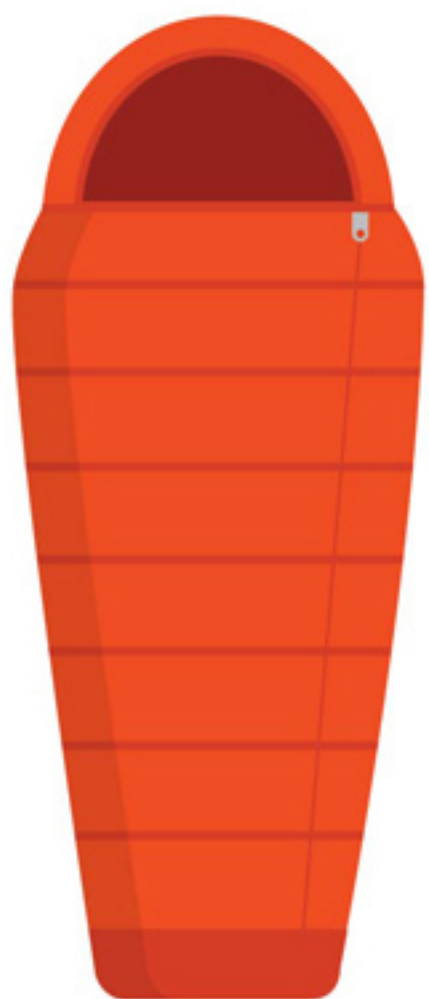
Authorised by Transport for Victoria, 1 Spring Street, Melbourne.

 METRO

PUBLIC
TRANSPORT
VICTORIA 













MAP OF MT ASPIRING *National Park*



WEST COAST
CONSERVANCY

CANTERBURY
CONSERVANCY

SOUTHLAND
CONSERVANCY

OTAGO
CONSERVANCY

EXPLANATION

- MT ASPIRING NATIONAL PARK
- STATE HIGHWAY
- HAWEA CONSERVATION PARK
- SECONDARY ROAD
- FIORDLAND NATIONAL PARK
- ADJOINING PUBLIC CONSERVATION LAND



MT ASPIRING NATIONAL PARK WAS ESTABLISHED IN 1964 AS NEW ZEALAND'S TENTH NATIONAL PARK. THE PARK COVERS 2,562 SQUARE KILOMETRES (1,375 SQ MI) AT THE SOUTHERN END OF THE SOUTHERN ALPS, DIRECTLY TO THE WEST OF LAKE WANAKA, AND IS POPULAR FOR TRAMPING, WALKING AND MOUNTAINEERING. MOUNT ASPIRING / TITITEA, ELEVATION 2,033 METRES (6,671 FT) ABOVE SEA LEVEL, IS THE MOUNTAIN THAT GIVES THE PARK ITS NAME.



MANIOTOTO







LAUDER HOTEL *Lauder* EST. 1904



VULCAN HOTEL *St Bathans* EST. 1882



BANNOCKBURN HOTEL *Bannockburn* EST. 1930



ROYAL HOTEL *Naseby* EST. 1863



RANFURLY HOTEL *Ranfurly* EST. 1930



CARDRONA HOTEL *Cardrona* EST. 1863



WHITE HORSE HOTEL *Clyde* EST. 1881



WEDDERBURN TAVERN *Wedderburn* EST. 1885



DUNSTAN HOTEL *Clyde* EST. 1904



ANCIENT BRITTON HOTEL *Naseby* EST. 1863



WHITE HORSE HOTEL *Becks* EST. 1864



NEW ORLEANS HOTEL *Arrowtown* EST. 1866



OTAGO CENTRAL HOTEL *Hyde* EST. 1927



OMAPAU COMMERCIAL HOTEL *Omapau* EST. 1898



LUGGATE HOTEL *Luggate* EST. 1869



COMMERCIAL HOTEL *Roxburgh* EST. 1864



DUNSTAN HOUSE *Clyde* EST. 1900



BLACKS HOTEL *Omapau* EST. 1937

CERVICAL SCREENING

The
Best

not nice
Thing

YOU CAN DO